

Contributing to the creation of an enriched society and aiming to become a company capable of continuing business for 100 years



In 1949, a year during an era when Japan was still in turmoil after the Second World War, company founder Ujihito Kimoto launched a film developing service used for developing aerial photographs for land surveying purposes. This was done in order to contribute to the creation of new maps as part of Japan's reconstruction efforts. Later, Ujihito Kimoto would go on to individually develop AK Kent Paper, a tear-resistant paper with outstanding dimensional stability which was used for official map master drawings. After that time, leveraging the company's two core technologies (image processing technology and surface technology) led to the creation of a variety of original products that were launched around the world.

In order to create an environment where employees can work with peace of mind, Kimoto works towards a system that aims at creating a balance between work, family life (especially for child rearing and care giving) and improving work flow. In addition, through event and project activities, we aim to stimulate communication among employees. Through open dialogue and cooperation which is not restricted by company position, we aim to continue providing customers with new value.

Furthermore, I believe that maintaining relationships of mutual trust with all persons involved in business activities, including customers, shareholders, employees, and members of the community, mutual trust serves as the foundation of our company. Connections between people are important.

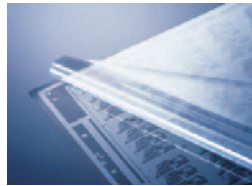
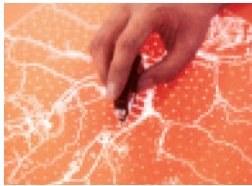
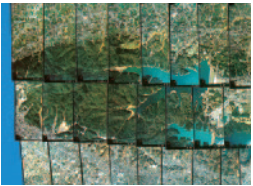
In consideration of our rapidly changing living environments, social conditions, economic climates, and media environments around the world, and based on the slogan "creating a single domain," our company is moving past regional boundaries and organizational frameworks, working to create a unified Kimoto worldwide to provide flexible and fast service on a daily basis.

Since Kimoto was established, we intensely focus on being a company which is not chiefly concerned with making profits, but rather a company that places importance on making a contribution to local society. From 2011, employees started producing rice by bringing abandoned paddy fields back to life. This approach, of developing together properties with local citizens while supported by local communities, such as activities including the rental of empty old houses for use as job training facilities for employees, is an important ideal of our company.

I am aware that there are so many Japanese companies which have been in business for more than one hundred years that there is almost no comparison when looking at Europe and the US. Although we have a long way to go before reaching our 100th year, we will improve technological developmental capabilities cultivated since our founding and improve our uniqueness as a company, strengthen systems which allow Kimoto to flexibly respond to market changes, and continue to steadily work hard in order to develop into a true global company capable of contributing to society.

Thank you very much for your continued understanding and support.

Kazunobu Kimoto President and Chairman



History of our Technology Development

Historical Events and Company History

Japan moves from its postwar reconstruction period and enters its rapid-growth era. Kimoto makes its start as a manufacturer in the precision map field, a field vital to readying land for use.

Kimoto moves from paper into the era of PET film. Expanding its functional film manufacturing technology, Kimoto plays a role in the development of the integrated circuit (IC) industry, a key industry of the times.

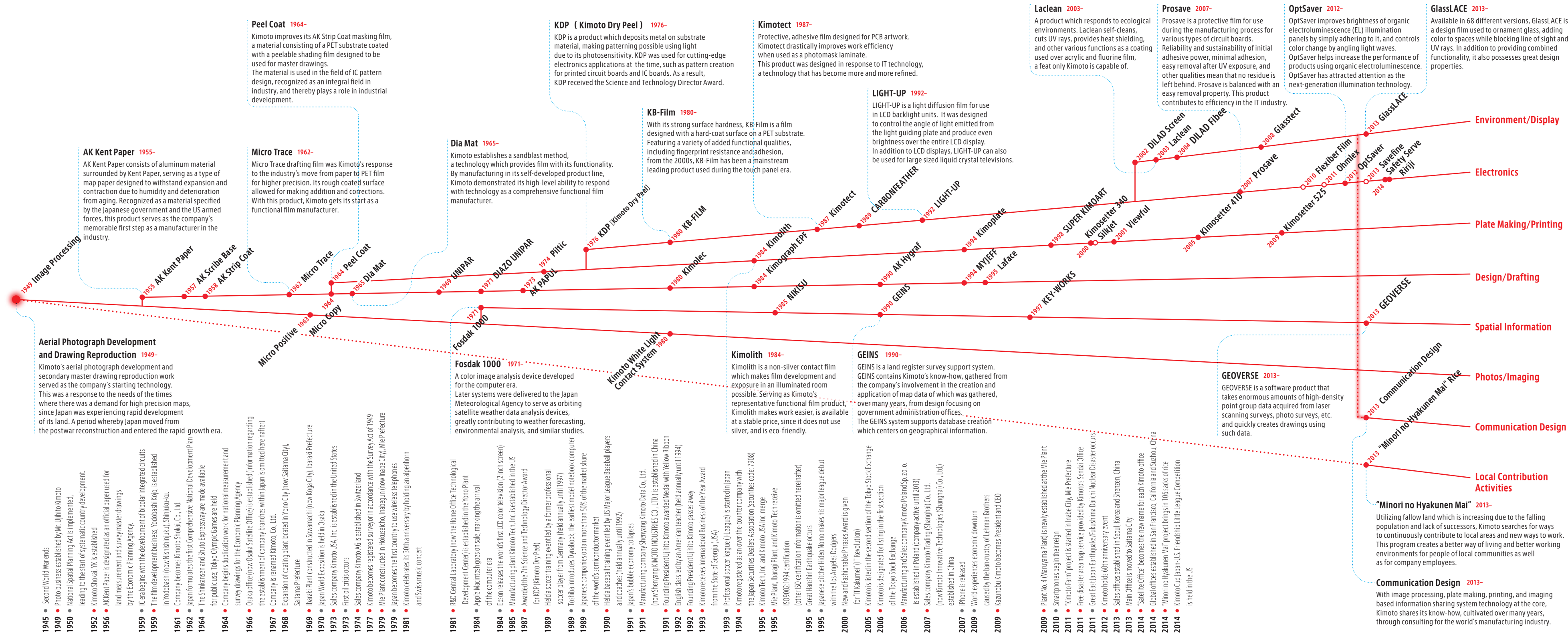
Kimoto shifts its focus from materials to the information industry. The company develops printed circuit boards, LCDs, and other products which contribute to the electronics industry.

Kimoto moves forward into its worldwide business era. The company establishes its first overseas location in the United States and provides products to large-scale consumption regions all over the globe.

From LCDs to touch panels. Kimoto uses hard coat films, light diffusion films, and similar products for products that symbolize the era.

Kimoto enters an era in which it provides solutions that respond to a variety of needs. The company proactively works toward making various technologies, such as photocatalytic, print system, and projection screen technologies, possible.

The company enters the era of it being a comprehensive business that creates environments for people. Questioning how a company should function, following the Great East Japan Earthquake, Kimoto creates everything from products environments to work environments.



KIMOTO WORLD DOMAIN

Georgia, USA

 KIMOTO TECH, INC.

Taipei, Taiwan

 KIMOTO CO., LTD.

Seoul, Korea

 KIMOTO CO., LTD.

Shenyang, China

 Shenyang KIMOTO INDUSTRIES CO., LTD.

Zurich, Switzerland

 KIMOTO AG.

 **Shenzhen**

Global Office

 **Suzhou**

Global Office

 Global Office

 Office

 Production

 Research and
Development

Ibaraki



Tsukuba



Saitama



Mie



CROSSING ∞ OVER

Kimoto's possibilities come together
in many ways

Whether it's conventional products or products that have never existed before,
Kimoto's creative powers become active with the coming together of our various possibilities.
Until now, Kimoto has been involved in the technology of image editing, management, and applications,
since its' founding of functional films, which support our advanced information society.
The company has provided the world with approximately 200 types of products and services.
As the company currently continues to achieve such results, it is further paving the way towards
new possibilities for in-house communications and local contribution activities.
Everything is aimed at creating a better social environment.
While contributing to society through its unique corporate culture, Kimoto continues to develop
and provide products and services necessary for society.

Crossing ∞ Abilities

Kimoto's domestic and overseas sales offices, R&D centers, and production locations,
provide for flexibility toward working together, as one company,
transforming possibilities into reality.

Development Capability

What things are necessary for our customers and our times?
Kimoto's development capability is our comprehensive strength
which allows us to turn our ideas into reality, from the design
stage to production line creation, not just supported
by chemical operations which create various functions.

Business Network

We want to directly link customer needs with production and
services. Kimoto provides one-stop services, from order acceptance,
to production, to final delivery, through its sales and production
locations scattered around the globe. Kimoto's collective efforts are
linked using the newest information and communications
technology in order to effectively respond to customer demand.



In regards to creating and providing support for survey map creation
systems, Kimoto has earned the trust of government administration
offices for more than half a century. This reliability can also be seen
in our functional film manufacturing. By establishing clean rooms
which boast the highest standards in the industry, Kimoto is able to
produce a wide array of high precision products.

Since the release of AK Kent Paper, Kimoto has cultivated its
technological superiority along with its development capability.
With further advances into functional film manufacturing,
information space and imaging technology efforts, Kimoto's
technological superiority is now expanding beyond the confines
of hardware and software.

Production Ability

Technological Superiority

In addition to sales of products from existing lineups,
Kimoto provides a variety of custom options to match customer demand.
Please be sure to contact Kimoto so that we can answer your questions
about potential product and service development.



∞ Surface Surface Technology/Functional Film Manufacturing

Functional films are capable of performing a variety of functions while only having a thickness of a few microns. Kimoto's cultivated surface technology allows the company to continue providing products to key industries which support our advanced information society.

Technology

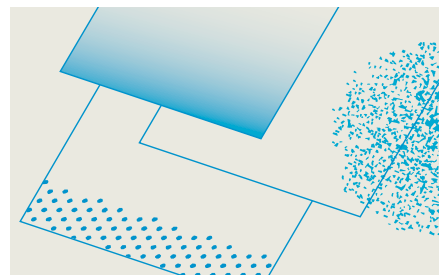
Technology is developed for substrate film which gives it functions that respond to various needs. In addition, we aim at eco-friendly production.

Materials

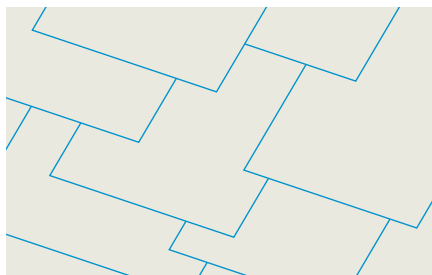
Kimoto expands the diverse functional possibilities by selecting various materials in addition to resins, such as metals (aluminum, etc.), paper, and synthetic paper.

Functions

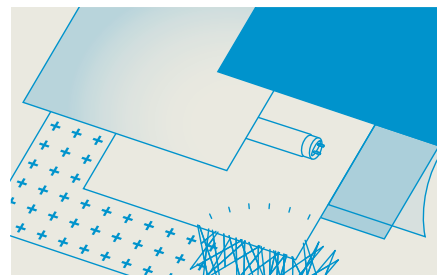
Offering a variety of functions: optical functions including light diffusion, reflection, light shielding, etc.; control of films physical properties which is resilient even for medicine products; and interface control with adhesion and stability.



- Wet coating
- Sandblast
- Transfer printing



- PET (polyethylene terephthalate)
- PC (polycarbonate)
- PVC (polyvinyl chloride)
- TAC (triacetyl cellulose)
- Acrylic
- Paper and synthetic paper



- Light diffusion
- Light shielding
- UV reduction
- Scratch-proof
- Durability
- Adhesion
- Fingerprint resistance
- Antistatic
- Decorative property

∞ Communication In-house Communication Consulting

Kimoto boasts a 60 year history in the two fields of manufacturing and information technology. We provide support for increasing enterprise power through both hardware and software for smooth communication in sales networks and at manufacturing locations.



Information

Kimoto will assist customers using its uniquely cultivated know-how, with everything from recognizing the importance of information sharing with manufacturing locations, as well as, with sales departments, to concrete methods for information sharing.

Media

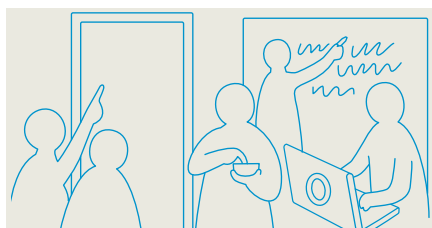
With our original digital signage technology at the core, we provide support for effective in-house communication systems through both hardware and software.

Network

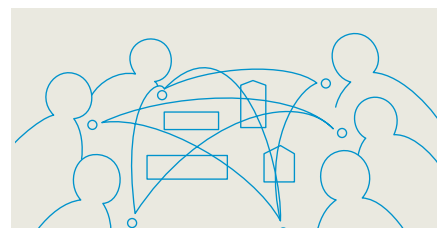
Kimoto develops shared offices for employees in locations all over the world. We support the creation of networks in a smooth, flexible manner anytime, anywhere.



- Support for distributing information within plant locations (Moving from actively spreading information to passively spreading information)



- Communication tools
- Digital signage systems
- Content making support
- Software development



- Communication design support for plant-plant communications and plant-office communications



∞ Information Spatial Information and Image Editing/System Development

From digital data analysis, to edit development of data management & application systems, Kimoto's know-how in the areas of spatial information and image editing, these are business areas where the company originated, and now has begun to expand into 2D, 3D, and beyond.

Forms of Data

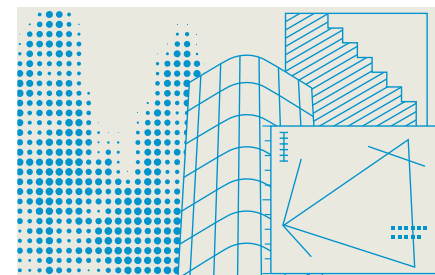
We cater to the ever growing forms of digital data, including 3D point group data acquired from laser scanning surveys and 2D map data utilized for surveys and land registration.

Technology

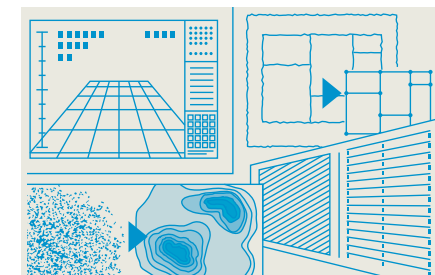
Kimoto Co. utilizes comprehensive implementation of technology from text, numerical and image system development, to data management and application, which includes digital data analysis, processing and editing, as well as database creation.

Application

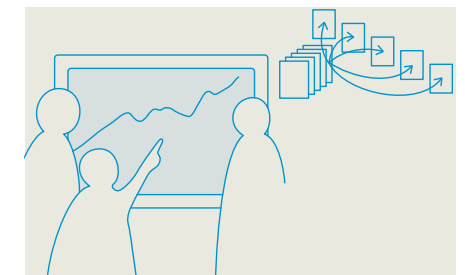
Information is shared and easily understood, since vast amounts of information is properly processed and visualized, and matched to each type of work format. This information provides support for decision making and emergence.



- Point group data
- 2D image data
- 2D/3D CAD data
- GIS (geographical information system) data



- Digital data creation
- Analysis, editing and processing
- Software development
- Archive creation, management and application



- Information visualization/sharing
- Information retrieval improvement
- Management
- Communication tools

∞ Local Local Contribution/Social Contribution Projects

Kimoto is developing its social responsibility as a company in the form of a sustainable system by utilizing abandoned rice paddies near our plants, discovering local resources and putting them into use again, and so forth. These are new steps for Kimoto, a company which has been dedicated to contributing to society since its founding.



Land and Resources

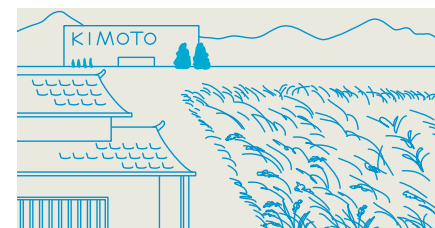
Kimoto develops projects which are designed for the effective use of abandoned rice paddies and empty houses, as resources in regions, where its production locations are located. These efforts contribute to the rejuvenation and revitalization of local environments.

Production and Processing

From the production of agricultural products to their final processed forms, Kimoto makes a substantial contribution towards the rejuvenation of local areas by using local resources and branding products with local flair.

Ways of working

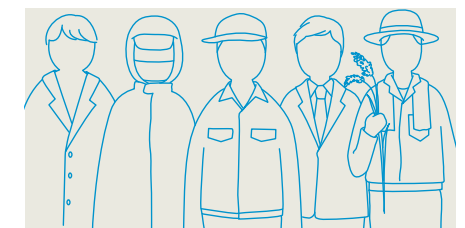
Kimoto creates environments where people, who are important to the company as well as to the community, can work with satisfaction. As a result, the company continues to search for new ways of working which have not previously existed.



- Reuse of abandoned rice paddies for agricultural purposes (Kimoto Farm)
- Use of empty houses as business facilities (Kimoto House)



- "Minori no Hyakunen Mai" brand rice (Koshihikari rice produced in Mie Prefecture)



- Contribution to food culture in Japan (by studying, tasting and experiencing foods)
- Creation of a system for leasing local resources
- Social Contribution Projects

Kimoto expands its business while keeping in harmony with local communities to create a sustainable society

As we enter into the 2000s century, people started deeply questioning what responsibilities companies have in regards to society. Since its founding, Kimoto has intensely focused on being a company which is not chiefly concerned with making profits, but focused on placing importance on paying consideration to regional environments where we are located as well as contributing to regional society. This approach of developing as a company, while keeping in harmony with local communities, is an important ideal of our company.



Revitalization of Local Communities

Kimoto has advanced with its local contribution activities. From 2011, we started a satoyama restoration project with land near our manufacturing plant in Inabe City, Mie Prefecture. We renovated old houses vacated due to the population declines, and transformed them into job training facilities for our employees. In addition, our Kimoto Farm project leased abandoned rice paddies for reuse, which resulted in the production of 26 sacks of rice in its first year. In its 10th year (2020), the Kimoto Farm project has increased its production to 268 sacks of rice, steadily increasing its production output.



Sports Promotion and International Exchange

Since Kimoto was founded, we have worked towards supporting children in the community through cultural and sporting activities. In particular, our Japan-U.S. Friendship Little League Game has been in existence for 16 years now and has become an event that local communities have become familiar with. In 2014, a team selected from Inabe City travelled to the US to play in the Japan-U.S. Friendship Baseball Game against a little league team from Cedartown, Georgia. All along, Kimoto has served as a bridge between overseas cities that it is related too. Some of these Japanese cities have experienced this bridge through its English classes, soccer training events, and similar activities. Through activities such as these, Kimoto has enhanced the desire to forge international friendships and cultivate the ability to realize dreams.



Consideration for the Environment

Since it was constructed in 1979, the Mie Plant has been working towards environmental conservation with a high level of awareness of its importance. Waste products from plant operations and other activities such as these are strictly managed; environment related surveys are periodically conducted in the surrounding community; and trees are planted on and off plant grounds on a periodic basis. These are just some of the efforts that form an approach that will never change. In addition, we are currently analyzing, what we can do as a company, to protect the environment, including working towards creating new manufacturing processes which do not use organic solvents.

Continuing to bring out creativity by providing a flexible office environment and work-life balance



Office Space

Each office was designed to be bright and spacious, with open-office seating throughout. This design leads to communication improvement between departments, free ways of thinking and a lively atmosphere.

Work-life Balance

Kimoto started a super flex system at all companies in the year 2014. In addition to telecommuting, employees are able to freely select any of our offices to work from. With the elimination of the core time requirement, each individual employee can freely choose when they want to work; this allows employees time for child rearing, care giving, as well as, time for themselves for self-development and hobbies. This system has made it possible for employees to work in a way that fits their particular lifestyle. Valuing individuality, employees can freely demonstrate their creativity. Enabling this concept greatly benefits the company.

- 2010 Open-office seating system adopted
- 2012 Desktop virtualization introduced
- 2014 Super flex and telecommuting options provided for all employees
- 2014 Global employee system adopted



In 2013, Kimoto moved its main office to Saitama City; together with a complete renovation of the Home Office Technological Development Center in Saitama, the company reorganized all its offices to become offices which are connected in a network. Kimoto's new office environment makes full use of cutting edge ICT (information and communications technology). This new ICT environment is changing the way people work, while being connected, with changing their way of thinking.



ICT Solutions

Equipped with advanced information and communications technology, each office allows employees the ability to access work using individual devices, creating an environment where an employee can perform business work on demand. The company provides a futuristic work style where cost reduction, improved productivity, business stimulation through speedy work development and risk management (for business continuance during emergencies) can be expected.

Kimoto Co., Ltd.

Corporate Profile

English version

Issued 04/ 2022

Listed on Tokyo Stock Exchange

Securities code: 7908

